



## P A L S

### Patient Advice and Liaison Service

#### Information for patients, parents and carers

PALS can help you:

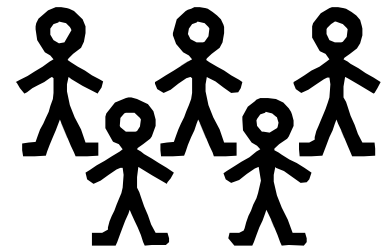
- find out about what we do
- with any problems you have with our services
- if you are worried about the care we provide
- to find other people who may help.



#### Who do PALS help?

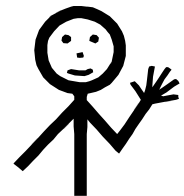
Children and young people.

Their families and carers.



#### How to get help

You can call into PALS office in Alder Hey.

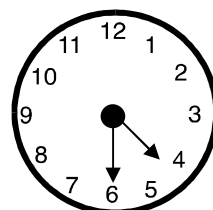
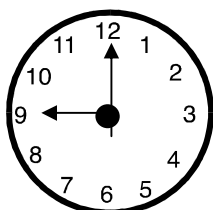


You can come and see PALS at these times from:

9.00 am

to

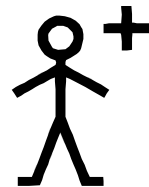
4.30 pm



PALS is open Monday to Friday. We are shut at night and on Saturdays and Sundays.

Monday	Tuesday	Wednesday	Thursday	Friday	Saturday	Sunday
√	√	√	√	√	X	X

You can ask for the Matron if you need to see someone when we are closed.



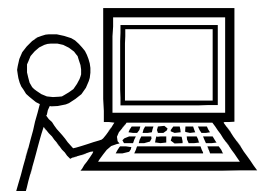
You can telephone PALS for help.



Our number is:       0151 252 5374  
                              0151 252 5161

You can send an e-mail to:

[pals@alderhey.nhs.uk](mailto:pals@alderhey.nhs.uk)



You can write to us at:

PALS  
Alder Hey Children's NHS Foundation Trust  
Eaton Road  
Liverpool  
L12 2AP



This information can be made available in other languages and formats if requested.